

Dual Rapid Fire

To use Dual Rapid Fire, scroll to mode 1 of your controller. Dual Rapid Fire will make dual weapons both shoot with rapid fire when the left and right triggers are pulled.

AutoSave

Your controller will automatically save every setting as you do it. You can remove the battery pack at any time and your settings will always be saved.

Mode Memory

Your controller will remember the last mode you were in when you shut off your controller. When you turn your controller on, it will automatically enter that mode.



Warnings

- Keep batteries fresh.
- Rechargeable battery packs are not recommended and may limit your controllers performance.
- Console limitations may limit the max speed your controller can be adjusted to.
- Remember to always turn the Mod off after shutting down your controller.



Information

- Instructions regarding Add-On Mods (if purchased) can be found on the additional instruction sheet provided.
- SPS: Shots Per Second.
- Always pause your game before changing any settings.

MoDs”R”Us

Xbox One Modded Controller

Instruction Manual

Website Support

www.modcontrollers.net

Syncing Your Controller

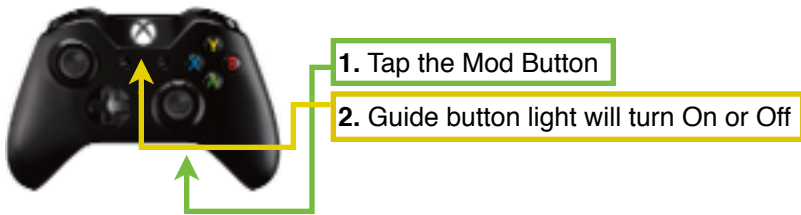


Rapid Fire Speed Guide

| Mode | Speed | Game: Gun |
|----------|--------|------------------------------|
| Mode 1: | 20 SPS | Dual Rapid Fire |
| Mode 2: | 20 SPS | Open Slot |
| Mode 3: | 20 SPS | Open Slot |
| Mode 4: | 20 SPS | Open Slot |
| Mode 5: | 24 SPS | Call of Duty Ghosts (MP-443) |
| Mode 6: | 22 SPS | Call of Duty Ghosts (P226) |
| Mode 7: | 16 SPS | Call of Duty Ghosts (Rifles) |
| Mode 8: | 20 SPS | Titanfall (Pistols) |
| Mode 9: | 24 SPS | Titanfall (Rifles) |
| Mode 10: | 20 SPS | Burst Fire (3-Shot Burst) |

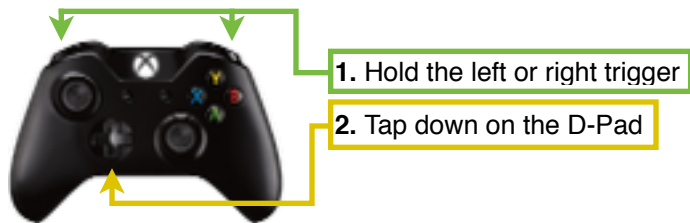
Rapid Fire

To turn Rapid Fire on, tap the Mod button on the back of the controller. When Rapid Fire is on, the guide button light will be on. When Rapid Fire is off, the guide button light will be off.



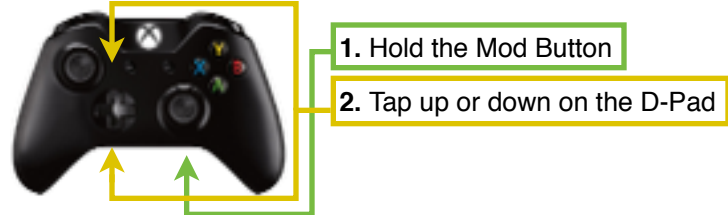
Adjusting Rapid Fire Speed

To increase the speed of any mode, hold the right trigger and tap “down” on the D-Pad. To decrease the speed of any mode, hold the left trigger and tap “down” on the D-Pad. Each time you tap the D-Pad, the guide button light will flash.



Changing Modes

You can change modes by going up a mode or by going down a mode. To go up one mode, hold the Mod button and tap “up” on the D-Pad. To go down one mode, hold the Mod button and tap “down” on the D-Pad. When you change modes, the guide button light will flash which mode you are in. (ex. 3 flashes = Mode 3)



Reset to Factory Settings

To reset your controller back to it’s factory settings, hold the left trigger and tap “up” on the D-Pad. The guide button light will flash 2 times, pause, and then flash 2 more times. This can be done in any mode.



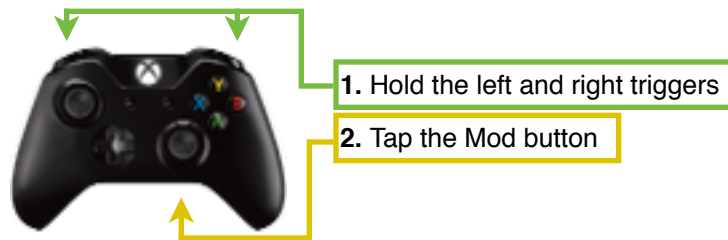
Reset a Mode to Default

To reset the mode you are in to it’s default settings, hold the right trigger and tap “up” on the D-Pad. The guide button light will flash 2 times, pause, and then flash 2 more times.

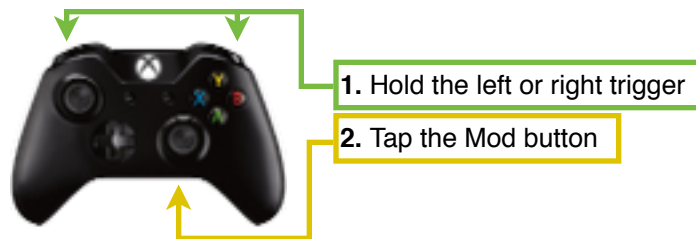


Adjusting Burst Fire Length (Complete All Steps)

You can adjust the number of shots in a burst (3 shot burst, 4 shot burst, etc.). To adjust the burst length, first make sure you’re in burst mode (Mode 10). Then, hold both the right trigger and left trigger and tap the Mod button. The guide button light will flash 2 times. This signals you are in programming mode.



Once you’re in programming mode, hold the right trigger and tap the Mod button to increase the burst length by 1 shot. Hold the left trigger and tap the Mod button to decrease the burst length by one shot. The controller is set to a 3-shot burst by default.



Once your burst length is all set, you’ll need to save the settings. To save the settings, hold both the right trigger and left trigger and tap the Mod button. The guide button light will flash 3 times. This signals your settings have been saved.

